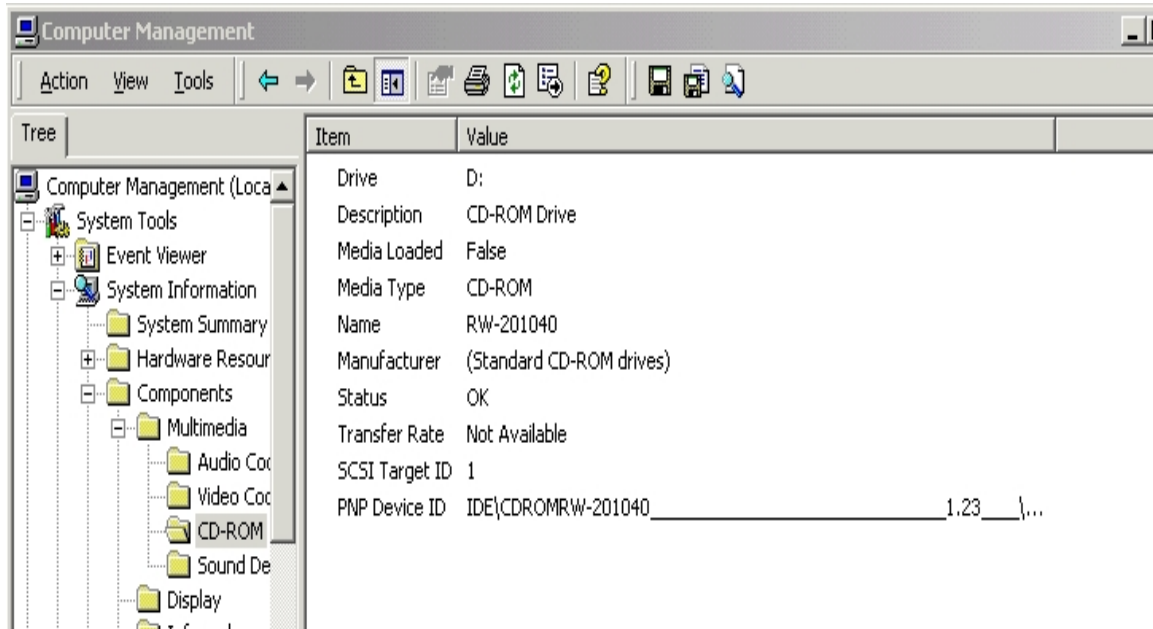


How to find firmware Revision of CDRW/DVD drive in Windows 2000

Follow the Click path as below:

Control Panel → Administrative Tools → Computer Management

You will open the window of Computer Management, and then click
System Tools → System Information → Components → Multimedia → CDROM
Click the View menu on the top bar, select Advanced, and then you will see the CDROM
information as below:



From the example above:

The model of CDRW	RW-201040
The Firmware Rev	1.23

Note: To display the Value of “PNP Device ID” completely, you need to adjust and increase the range of the Value column, or you can point the pointer of the mouse in to the Value area of the PNP Device ID (point it at IDE\CDROM...), and stay the Mouse pointer a while, then the completed ID will be displayed as picture shown below:

The image shows a screenshot of a Windows Device Manager window. The window title bar includes standard Windows icons and a system clock showing 10:00. The main content area displays the properties for a CD-ROM drive, organized into two columns: 'Name' and 'Value'. The 'PNP Device ID' property is highlighted with a mouse cursor, and its value is 'IDE\CDROMRW-201040'. A horizontal scroll bar is visible at the bottom of the table.

Name	Value
Drive	D:
Description	CD-ROM Drive
Media Loaded	False
Media Type	CD-ROM
Name	RW-201040
Manufacturer	(Standard CD-ROM drives)
Status	OK
Transfer Rate	Not Available
SCSI Target ID	1
PNP Device ID	IDE\CDROMRW-201040