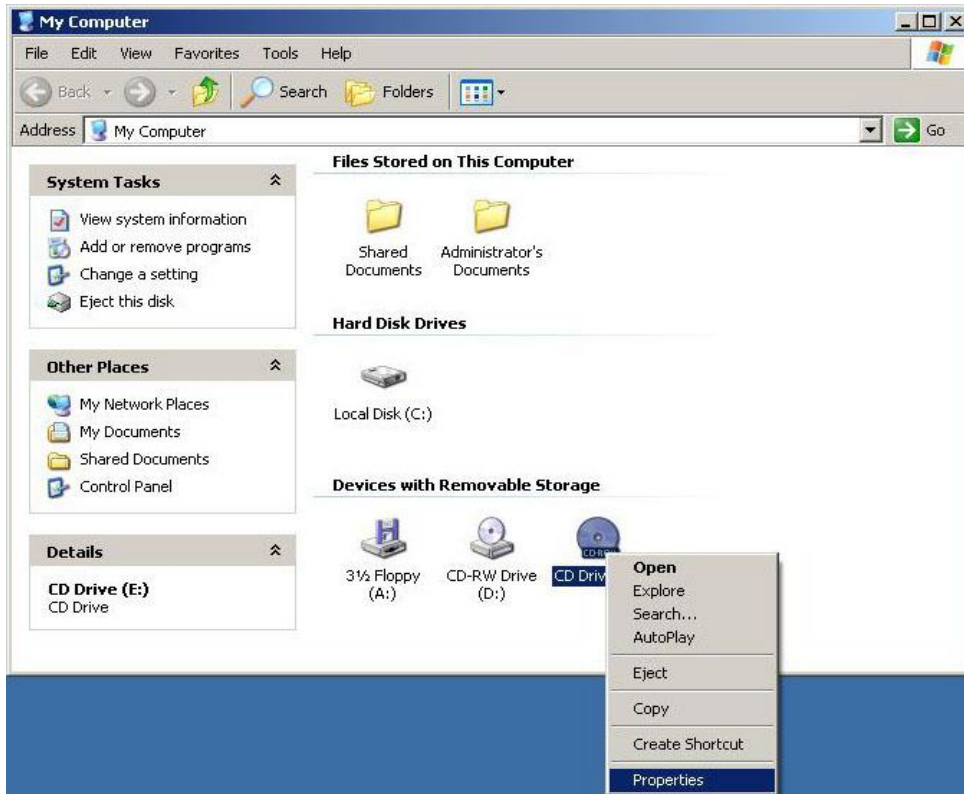


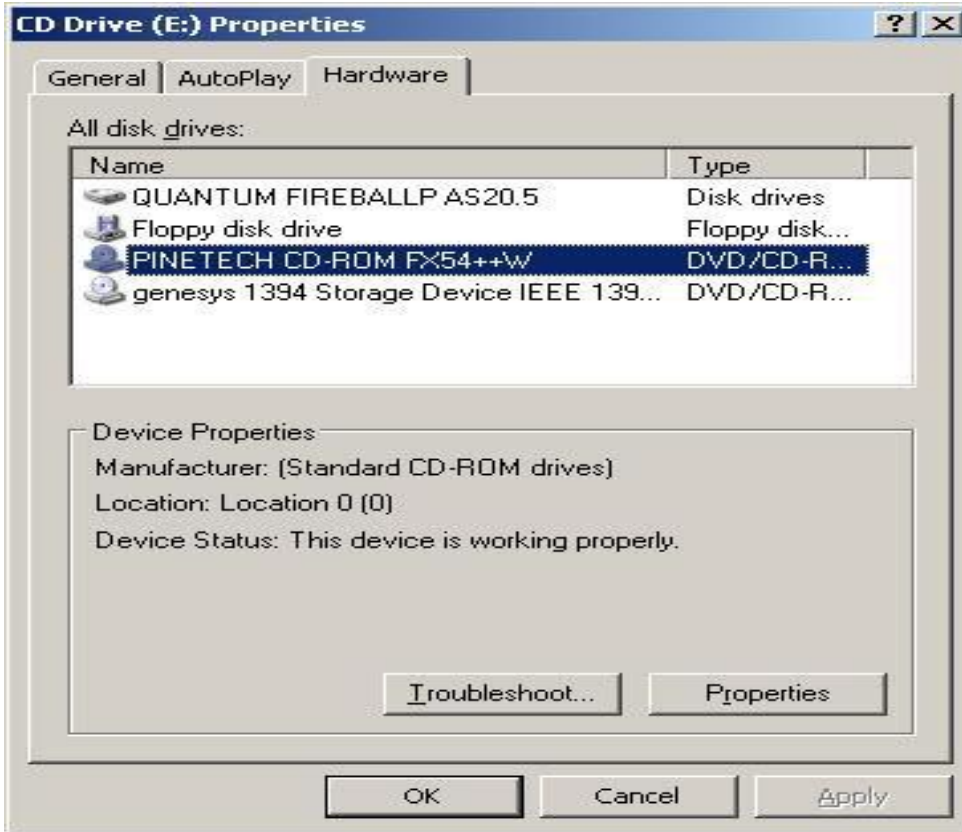
Right-click on any HDD/CDROM device and choose **PROPERTIES**.



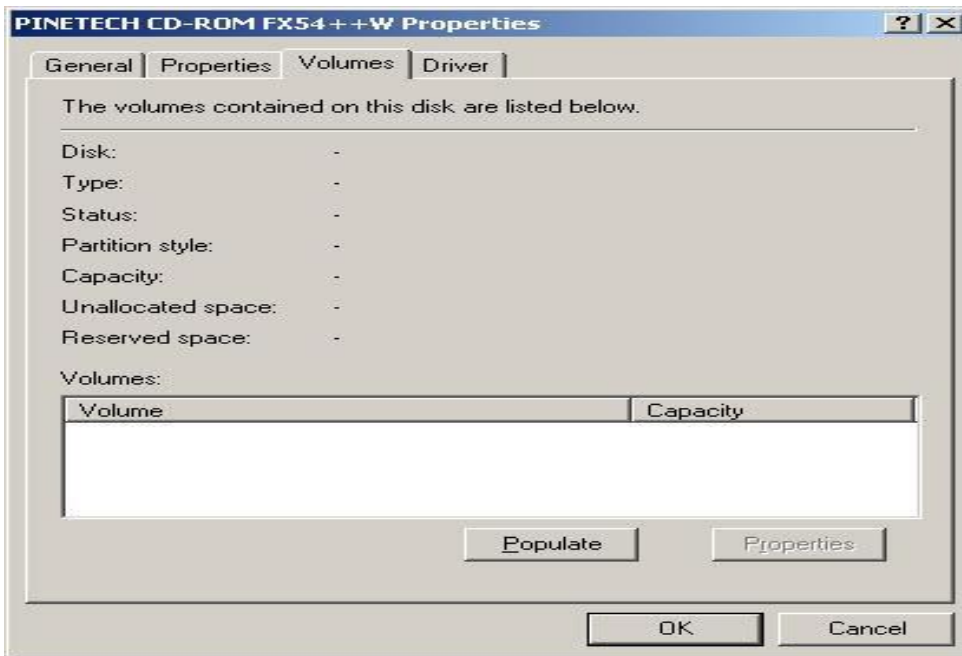
Select **HARDWARE** tab.

Select the CDROM/CDRW drive that cannot access the CDROM.

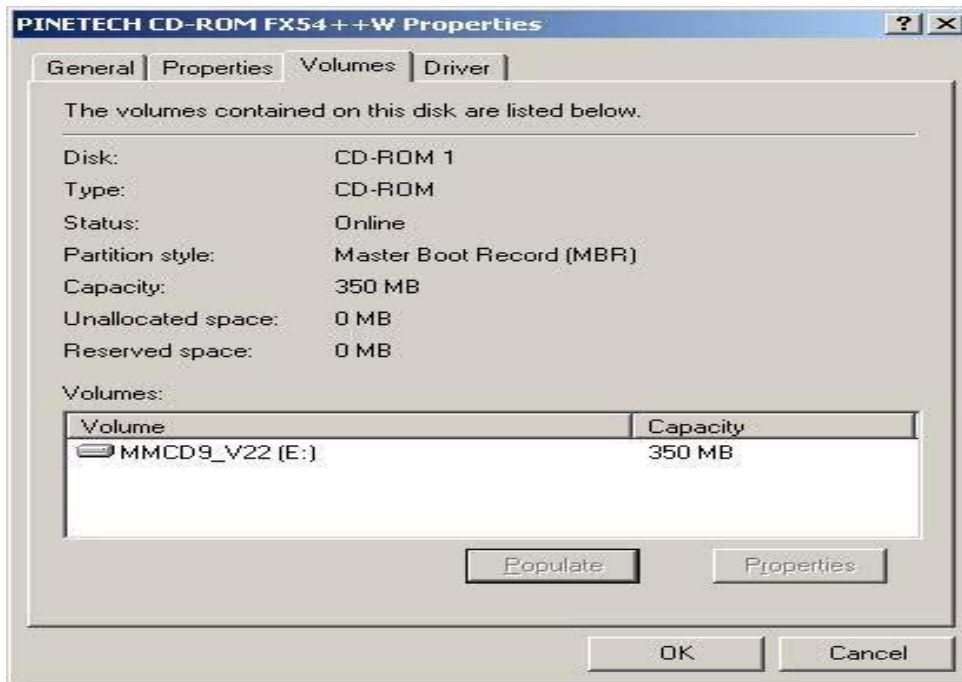
Left-click **PROPERTIES**.



Select **VOLUMES** tab.
Click **POPULATE** button.



Should shown **Volume Name** and **Capacity**.



You can now access the files on the CDROM disc.

