
Pioneer DVR-105

Installation Guide

And

User's Manual

Trademark:

All of the company or product names mentioned in this manual are the trademarks or registered trademarks of their respective holders.

Disclaimer:

All of the contents in this manual are subject to change without prior notice. The manufacturer makes no representations or warranties with regard to the contents hereof and reserves the right to revise this manual without obligation to notify any person. Manufacturer shall not be liable for any technical or editorial errors or omissions contained in this manual, or for any damage, direct or indirect, from discrepancies between the manual and the product it describes. Manufacturer assumes no responsibility, directly or indirectly, for financial losses or claims from third persons resulting from the use of this product and any of its functions.

Safety Notice:

1. This equipment should not be exposed to water or other liquids in order to avoid danger of electric shock.
2. Place the power cord such a way that people cannot step on it.
3. Do not place anything over the power cord.
4. Do not cover the openings; the openings on the equipment are for air convection hence protects the equipment from overheating.
5. Do not attempt to remove the cover of this equipment.
6. If any of the following situations arises, have the equipment checked by a service personnel:
 - The USB connector is damaged.
 - The power cord or connector is damaged.
 - Liquid has penetrated into the equipment.
 - The equipment has dropped and damaged.
 - The equipment has obvious sign of breakage.

Limited Warranty

This product is warranted against manufacturing defects for the period of **one year**.

The warranty period commences on the date of purchase from the authorized reseller/retailer.

Your original purchase invoice, showing the date of purchase of the product is your proof of the date of purchase.

During the warranty period, defective parts will be repaired or replaced. There will be no charge for labor or parts during the one-year warranty period from the date of purchase.

Any shipping or other cost such as customs incurred costs, etc... is customers' responsibility.

This warranty does not cover any failure resulting in loss to software, data, lost profits, lost savings, any incidental damages or other economic consequential damages due to accident, abuse, misuse, negligence and acts of God.

Technical Support and Service

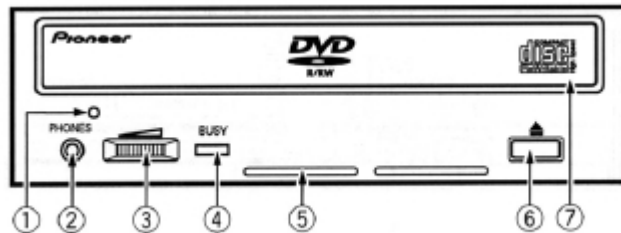
For warranty service and assistance, it is recommended that you contact the place of purchase to arrange for return and/or repair of the product.

Introduction

Thank you for purchasing DVR-105. In this manual, we will explain how to install your drive. Please read this manual carefully before usage.

Note: the front panel and rear panel shown on the pictures below may not look exactly as the product.

Front Panel



1. Emergency Eject Hole

When the drive cannot eject disc tray due to power failure or any other reasons, use a 2-inch long thin pole & push the emergency eject hole on the front panel to eject. (This function is only to be used in emergency cases. Do not use this function as a normal practice to prevent mechanical damage. Make sure the system is off when you do this).

2. Headphone Jack

To connect a headphone

3. Volume Control

To adjust volume output of headphone jack only. It has no affect to audio output connectors on the rear panel.

4. Busy Indicator LED

When a disc is being accessed, the light will shine or flash.

5. Ventilation Holes — do not block

6. Eject Button

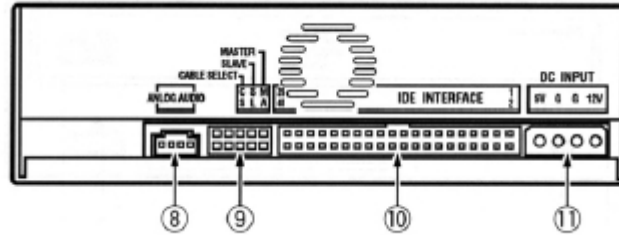
Eject or bring in the disc tray

7. Disc Tray

This is the tray for the disc

Rear Panel

It is particularly important that you understand the connectors of this rear panel.



8. Audio Output

To connect your DVD RW drive to sound card (analog signal).

9. Device Configuration Jumper

To set configuration ID for your drive. Options are Master (MA), Slave (SL) and Cable Select (CS).

10. IDE Interface

Use a 40-pin flat IDE cable to connect your drive to IDE controller.

11. Power Connector

Use to connect to the host computer's power supply (5V/12V DC).

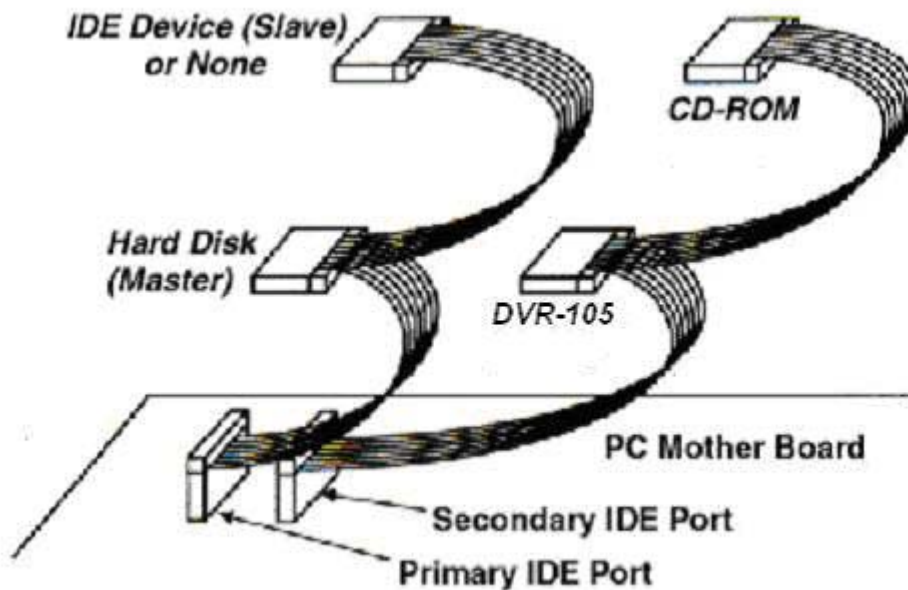
Hardware Installation

CAUTION: Static electricity can damage electronic circuitry. To avoid static discharge, touch a grounded metal object (i.e. your computer case) or wear a grounding strap connected to a ground source.

Make sure Power and IDE cables are connected properly otherwise it may cause damage to the equipment (not covered under warranty). Always turn off the computer's power before connecting or disconnecting any jumper or cable on the drive.

Identifying your Hardware

Remove the housing or casing of your computer. Look inside to see how your drive(s) were being connected. Note: IDE cable is the one with 40 pins/wires; vs. 34 pins/wires is for floppy drive (do not use floppy cable with the DVR R/RW drive, otherwise it may damage your drive or the controller).



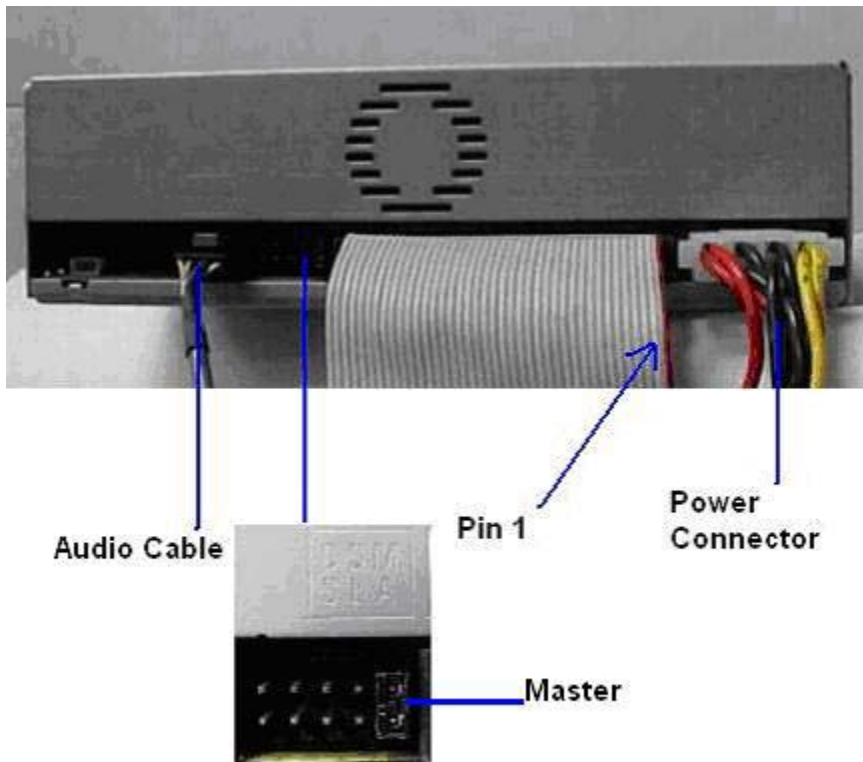
The connection of Primary or Secondary IDE Port

Most Motherboards have two IDE Ports; each port is able to control 1 or up to 2 drives. If you would like to set up two drives with the same port, make sure one is set to master (MA) and the other is set to slave (SL).

If there are two IDE ports

One Drive Configuration

1. Given there is no other CD-ROM drive in your secondary IDE port. We recommend installing the CD-R/RW in the Secondary IDE port and set to Master (MA). *See diagram below.*



Two Drives Configuration

If a CD-ROM drive has been installed in your secondary IDE port previously, please follow instructions written below.



1. Firstly, ensure there are two connector-ends available for two IDE devices on **secondary IDE cable**. If not, replace the cable with one that has two connector-ends. If you do not have such cable, you may purchase it from the store you purchased this drive from.
2. Check the jumper setting on CD-ROM drive that is connected in your computer. We recommend you to install the CD-ROM on the Secondary IDE channel as the slave device (SL), and the DVR-105 on the Secondary IDE channel as the master device (MA). If the CD-ROM in your system was set to cable select (CS) then set the DVR-105 to cable select (CS), provided you are still using the same CS type cable in your system.

Setting	Option (1)	Option (2)	Option (3)
CD-ROM	Master (MA)	Slave (SL)	Cable Select (CS)
New DVR-105	Slave (SL)	Master (MA)	Cable Select (CS)

Ensure that you select CS mode ONLY if your cable type is a Cable Select. If you are not certain about the existing cable & still want to use CS mode, we recommend purchasing an 80-conductor Ultra DMA cable (which is compatible with CS mode). Or else, purchase a normal 40-conductor cable and select MA/SL modes.

You may read some articles to understand more of this technical issue.
<http://www.pcguides.com/ref/hdd/ide/confCS-c.html>

3. Install the DVR-105 to an available 5.25-inch bay.
4. Connect your CD-ROM and DVR-105 drive together. Color edge of the IDE cable must be aligned with Pin 1 of the IDE controller.
5. Connect audio cable. If the audio cable of your CD-ROM drive has already been connected, this step is not necessary for your DVR-105.

Note: Most sound cards support one audio cable for CD/DVD Drive only. You have to select the drive that you want to play music CD with then connect the audio cable to that drive.

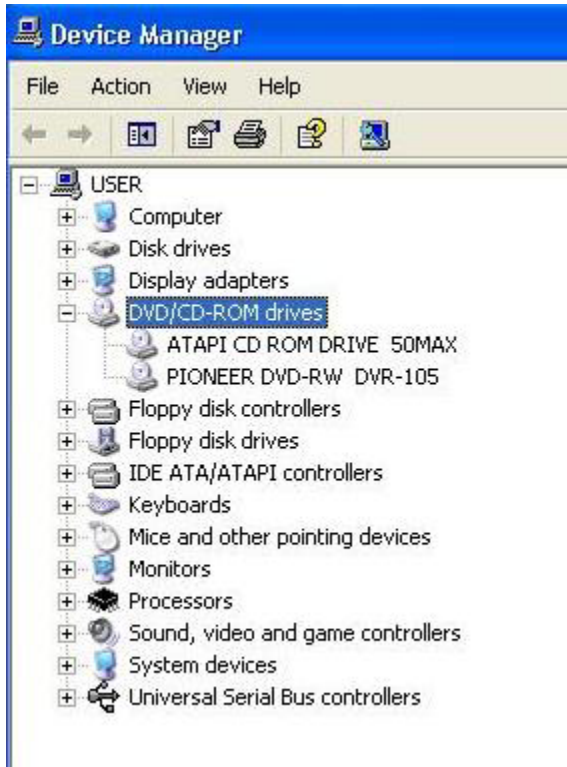
You may select digital playback option on Audio CD player software, such as on later version of MS Windows media Player. You will then able to playback Music Audio CD on the DVD or CD drive without audio cable connected.

If there is only one IDE port

Most likely you would have a hard drive connected to that port currently. Thus, set your DVR-105 to "Slave" and connect it to the same port. Check and ensure that the hard drive is on Master and **not** Cable Select. If the hard drive was set to Cable Select, set your DVR-105 drive to Cable Select as well.

Checking the Drive

This is to check whether your newly installed drive is connected properly. Go to My Computer and see if there is a new drive letter (or icon) shows up for the DVR-105. You may also check it in “device manager”:



If you do not see the new drive, shut down the computer immediately. Check both the connection & jumper setting; make sure they are done properly.

Software Installation

Additional software is required to use your DVR-105 DVD-R/-RW. You will find two software CDs included in the packaging:

1. “Nero Express/Nero VisionExpress plus MPEG-2/DVD Plug-in” CD

This CD includes the following programs:

- Nero Express: Recording and Storing Data, Music, Video files on Recordable or Rewritable CD/DVD discs.
- NeroVision Express (plus Mpeg-2/DVD Plug-in): Create your own VCD, SVCD, and DVD.
- InCD: Packet Writing program to allow you to format rewritable media (CD-RW, DVD-RW) such a way that they can be used as hard or floppy disks, i.e. data files can be saved on the media from any applications.

For more information, manuals of Nero software can be located in "Nero Express/Nero Vision Express" CD.

Nero Express manual:

\Nero55\Nero\NeroExpress_ENG.PDF

English manual

\Nero55\Nero\NeroExpress_FRA.PDF

French manual

\Nero55\Nero\NeroExpress_ENG.CHM

English Help HTML file

\Nero55\Nero\NeroExpress_FRA.CHM

French Help HTML file

Nero Vision Express manual:

\NeroVision\NeroVision\NeroVisionExpress_ENG.PDF

English manual

\NeroVision\NeroVision\NeroVisionExpress_FRA.PDF

French manual

\NeroVision\NeroVision\NeroVisionExpress_ENG.CHM

English Help HTML file

\NeroVision\NeroVision\NeroVisionExpress_FRA.CHM

French Help HTML file

Nero INCD manual:

\INCD\InCD_eng.PDF

English manual

\INCD\InCD_fra.PDF

French manual

\INCD\InCD_Us.CHM

English Help HTML file

You can also download the latest version of the Nero manual from

<http://www.nero.com>

2. Cyberlink's PowerDVD

Power DVD is included for viewing DVD movie on your PC.